

Sandhill Organics

Community Supported Agriculture Information and Registration 2012



About our Farm

Sandhill Organics is a diversified farming operation owned by Matt and Peg Sheaffer. We began farming twelve years ago, shortly after graduating from college, with little more than a pitchfork and a wheelbarrow. With the help of friends and family, Sandhill Organics has become a successful and widely-respected family farm serving more than 300 CSA member families in the Chicago area. We raise laying hens and a wide variety of fresh produce on our farm in Grayslake, just south of the Illinois-Wisconsin border. In 2010 we purchased a farm near Brodhead, Wisconsin where we raise sheep and a handful of vegetable crops such as tomatoes, peppers and potatoes.

What is Community Supported Agriculture?

Our CSA program provides our members with access to high-quality, organic vegetables and sustainably grown fruits on a weekly basis from May to November. CSA provides us, the farmers, with a dependable income and a meaningful connection to our customers. The long-term viability of the kind of farming we practice is created through CSA memberships. Members pay a fee at the beginning of the season or in several installments throughout the season. Between May and November, members receive a “share” of the harvest in the form of a weekly box of fresh vegetables, fruits, and/or eggs. The boxes are picked up from convenient host sites around the Chicago area (see page 4). The average amount of produce each member receives on a weekly basis is slightly more than a half bushel (one standard paper grocery bag). If you are unable to pick up your share on a particular week, please ask a friend or neighbor to pick it up for you. We regret that we are unable to give credit for weeks that you are on vacation, out of town, etc.

Weekly Farm Blog

One way that we build community at our farm is by writing a weekly farm blog for our members. The blog is really a newsletter designed to be a forum for sharing stories, news from the farm, photos and articles relating to agriculture and the environment. To help you make the most of each week’s assortment of produce, each weekly blog post also includes vegetable storage tips and mouthwatering recipes. To view our blog, please visit, <http://sandhillorganics.blogspot.com>.

Visit the Farm

Part of the fun of being a member of a CSA farm is the opportunity to take part in farm events. Farm events are publicized in the weekly farm blog. Please contact us if you are interested in volunteering at the farm either occasionally or on a regular basis.

Sandhill Organics

2012 CSA Offerings

Sold Out

Spring Vegetable Share (Week of May 7th—Week of June 11th)

Asparagus and rhubarb are just a few of the treats that you will receive as part of the spring share. Your box will also include tender spring delicacies grown in our greenhouses. These include salad mix, bok choy, endive, arugula, baby turnips, baby chard, spinach, sprouts, dandelion greens, head lettuce, radishes and more.

Summer Vegetable Share (Week of June 18th—Week of Oct 8th)

Over the course of the season you will receive all of the “classic” summer vegetables plus a few new ones that you are sure to enjoy. The list includes basil, beans, beets, broccoli, cabbage, carrots, celery, corn, cucumbers, eggplant, fennel, garlic, herbs, kale, kohlrabi, leeks, lettuce, melons, onions, parsley, peas, peppers, potatoes, pumpkins, radishes, scallions, spinach, swiss chard, tomatoes, turnips, winter squash, and zucchini. The summer share also includes a modest amount of fruit (strawberries and melons) from time to time. Please consider the fruit share if you would like to receive fruit on a regular basis.

Fall Vegetable Share (Week of October 15th—Week of November 12th)

The fall share is the perfect way to savor the flavors of our Midwestern roots. You will receive beets, cabbage, carrots, cranberries, garlic, kale, herbs, leeks, onions, parsnips, potatoes, rutabagas, salad greens, shallots, spinach, sweet potatoes, turnips, winter squash and more.

Fresh Fruit Share (Week of June 25th—Week of October 1st)

We are proud to bring our customers the most delicious local fruit available. Throughout the fruit season you will receive assorted seasonal fruits including blueberries, peaches, plums, grapes, nectarines, raspberries, apples, pears, blackberries and more.

Please note that these fruits are not certified organic. They are grown by a friend in Michigan who uses the Integrated Pest Management system. This means that synthetic fertilizers and pesticides are used in the smallest possible quantities in order to minimize the impact on the natural environment. Don't miss out on this opportunity to savor truly delectable fruit and to support a local fruit farmer who cares about your health and the health of the environment.

Please visit the FAQs page at www.sandhillorganics.com for more information on variety and quantity.

We're Working Together to Bring you the Best!

On average, produce from our farm makes up approximately ninety percent of the produce in the weekly share. Occasionally we collaborate with other local farmers to create a box that is as varied as possible from week to week. We work with the following farmers:

- Tipi Produce, Evansville, Wisconsin — rhubarb, watermelons
- Genesis Growers, St. Anne, Illinois — pie pumpkins, winter squash
- Mick Klug Farm, St. Joseph, Michigan — strawberries*
- River Valley Ranch, Burlington, Wisconsin — mushrooms
- Skelly's Farm Market, Janesville, Wisconsin — sweet corn*

**not certified organic*

Please note...

We will do our best to provide you with all of the crops mentioned above. However, crop quantities and varieties may vary due to a number of factors, and certain crops could fail due to weather, insects, or other causes.



Sandhill Organics 2012 CSA Member Registration

Name _____

Address _____

Phone & Email _____

Pickup Site (see page 4) _____

Please choose from the following options:

Spring Vegetable Season (Week of May 7th—Week of June 11th) *sold out* ~~\$180.00~~

Summer Vegetable Season (Week of June 18th—Week of October 8th) \$535.00

Fall Vegetable Season (Week of October 15th—Week of November 12th) \$180.00

Fresh Fruit Season (Week of June 25th—Week of October 1st) \$235.00

Please complete the following:

A. Subtotal of Vegetable & Fruit Share(s)..... _____

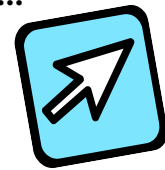
B. IL Sales Tax _____
(Multiply Line A by 0.0175)

C. Total due..... _____

**Please mail
page 3 to:**

Sandhill Organics
32140 Harris Road
Grayslake, IL 60030

(847)548-4030
www.sandhillorganics.com



*See page 4 for
details on how
to pay this
amount in
multiple
installments.*

Payment Options

1. **Full Payment Option:** This works best for us as it allows us to purchase seeds and supplies before the growing season starts. Please make your check payable to *Sandhill Organics*.

2. **Extended Payment Options:**

- **IF THE TOTAL DUE IS MORE THAN \$510.00**, you may pay in 2 installments. Please enclose 2 checks, dated today's date and May 1st. Each check should equal one-half of the total.
- **IF THE TOTAL DUE IS MORE THAN \$690.00**, you may pay in 3 installments. Please enclose 3 checks, dated with today's date, May 1st and July 1st. Each check should equal one-third of the total.
- **IF THE TOTAL DUE IS MORE THAN \$840.00**, you may pay in 4 installments. Please enclose 4 checks, dated with today's date, May 1st, July 1st, and August 1st. Each check should equal one-fourth of the total.

Pick-up Sites

Pick-up is on WEDNESDAYS at the following sites:

- **Barrington (207 N. Hager) 3-8 p.m.**
- **Glenview (727 Harlem Ave.) 4-7 p.m.**
- **Lake Forest (370 E. Westminster) 4-8 p.m.**
- **Northbrook (Allstate Insurance) time to be determined—please email for information**

Pick-up is on THURSDAYS at the following sites:

- **At the farm in Grayslake (32140 Harris Road) 3-7 p.m.**
- **Glen Ellyn (537 Hillside Ave.) 3-8 p.m.**
- **Clarendon Hills (418 Ridge Ave.) 3-8 p.m.**
- **Oak Park (Buzz Café) 4-7 p.m.**

We will send you a postcard and an email confirmation prior to the start of the season. The postcard and the letter will contain details specific to your pick-up site.